



AUCTION

LEADING THE INDUSTRY SINCE 1945

Wednesday – October 24, 2018 – 4:30 PM
Real Estate Sells At 5:00 PM

Lee Family Auction – Attention Investors!

TWO HOMES – SHOP – 1.95 ACRES – SELLS AS ONE UNIT

Sandy Twp. – Stark Co. – Sandy Valley Schools

Also Selling: Furniture – Collectibles

Longtime family owned. Absolute auction, all sells to the highest bidders on location:

7394 & 7366 Waynesburg Dr. SE, Waynesburg, OH 44688

Directions: From Waynesburg, take RT 43 just north to auction. Watch for KIKO signs.



Information is believed to be accurate but not guaranteed.



330.455.9357 • kikoauctions.com



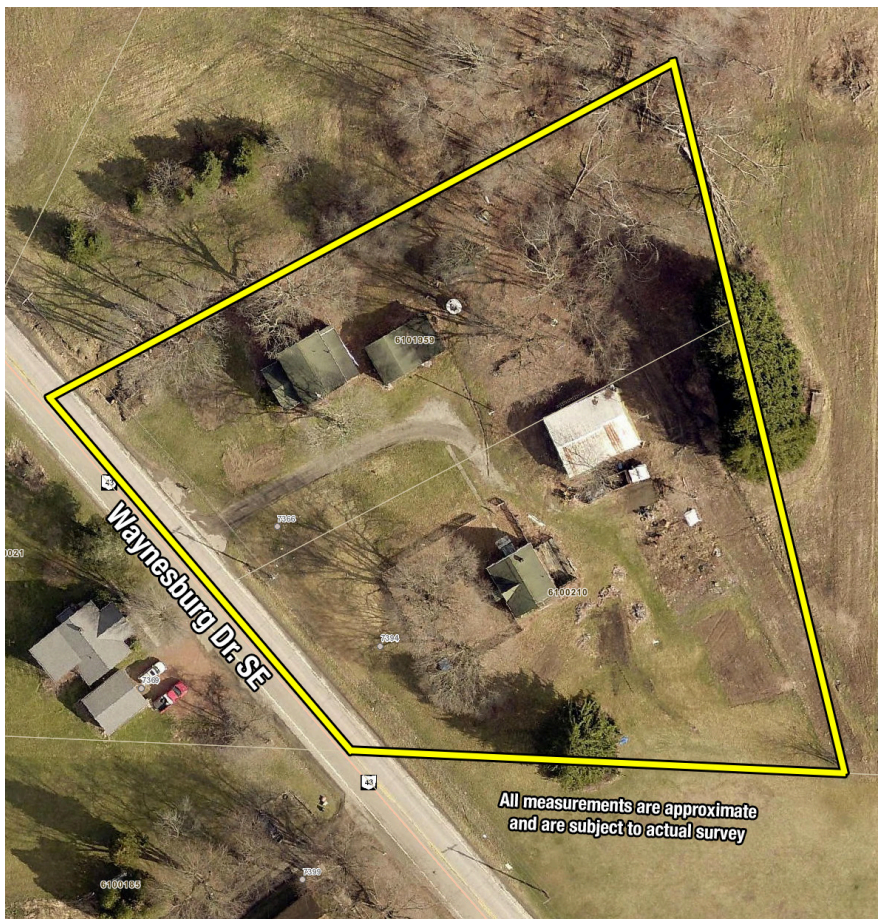
Real estate features clean bungalow home w/ vinyl siding. 2 bedrooms, 1 bath, living room, kitchen on main level. 1 bedroom/storage on second level. Basement w/ oil furnace. Home insulated & rewired in 2012. Fenced yard, rear deck. 30' x 40' shop w/ steel roof. Also selling early farmhouse ready for updates! Kitchen, dining/living room, half bath on main floor. 4 bedrooms & full bath on second floor. Enclosed front porch, alum. siding, full basement & 2-car garage. Elevated nice off street. Selling all as one. Good investment opportunity w/ country rear setting. Buildings open auction day at 3:00 PM.

TERMS ON REAL ESTATE: 15% down auction day, balance due at closing. A 10% buyer's premium will be added to the highest bid to establish the purchase price, which goes to the seller. Any desired inspections must be made prior to bidding. All information contained herein was derived from sources believed to be correct. Information is believed to be accurate but not guaranteed.

HOUSEHOLD – COLLECTIBLES: (3) bedroom suites – early toys include Marx, Johnny Lightning, Tudor – youth wicker chair & baby buggy – kneehole desk – end tables – lamps – cookbooks – computer desk – card table – ironing boards – pots & pans – usual household – costume jewelry – assorted china – dining table w/ buffet – sewing machine – oil lamps – material – craft items – fans – platform rockers – dressers – drop front desk – sweeper – metal bed – Philco radio – postcards – match books – linens – wicker chair – metal kitchen cabinet – kitchen table w/ chairs – mirrors

TRACTOR – TOOLS: Ford diesel lawn & garden LGT14 w/ 48" mower deck – tree spade – sprayer – 5HP chipper/shredder – 4" Craftsman jointer – 32' fiberglass ladder – 2-hole hog feeder – (approx. 12 sheets), Marlite type 4x8' paneling – hand tools – Delta shaper & radial arm saw – holding brackets for Christmas tree display – bow maker – wreath rings – Kelco wreath maker – leaf vac – generator (unknown condition) – front tine rototiller

TERMS ON CHATTELS: Driver's license or State ID required to register for bidder number. Cash, Check, Debit Card, Visa, or Master Card accepted. 4% buyer's premium on all sales; 4% waived for cash or check. Information is believed to be accurate but not guaranteed.



Auctioneer/Realtor®
ANNA C. VANDYKE
330-309-8044
anna@kikocompany.com



Auctioneer/Realtor®
GEORGE P. KIKO
330-418-1095
george@kikocompany.com



330.455.9357 • kikoauctions.com

